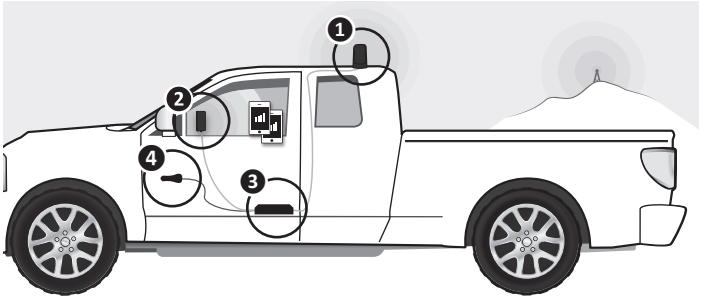


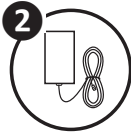
# QUICK SETUP GUIDE

## SureCall Fusion2Go™ XR

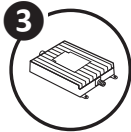
### OVERVIEW



Outside antenna



Inside patch antenna

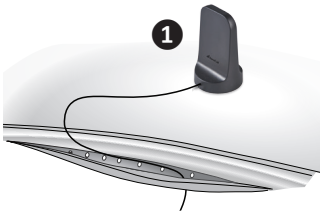


Booster



DC power supply

### STEP 1. PLACE OUTSIDE ANTENNA



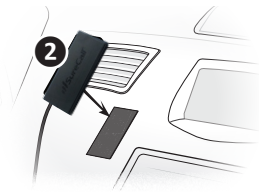
Place the magnetic-mount antenna on the top of your vehicle toward the back to maximize the separation from the inside antenna.

Run the cable across the car's roof and into the car. To hide and protect the antenna cable, carefully pull down the headliner, run cable underneath it and push the seal back into place.

For non-magnetic vehicle body, use the adhesive option included in package.

Note: Ensure that the antenna has at least a 12-inch radius clear of obstructions and other radiating elements, such as a radio antenna.

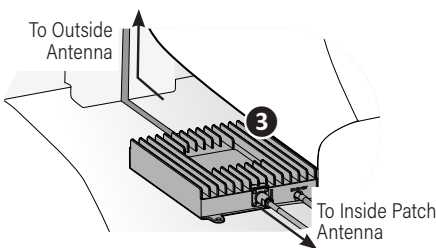
### STEP 2. INSTALL INSIDE ANTENNA



Identify a location for the inside antenna on or near your front dashboard that is: (1) Within 2-3 feet of typical cell phone location, (2) At least 8 inches (20cm) from cellular devices and (3) At least 4 inches (10cm) from metal.

Peel Velcro backing and apply to a clean dry surface in your chosen location.

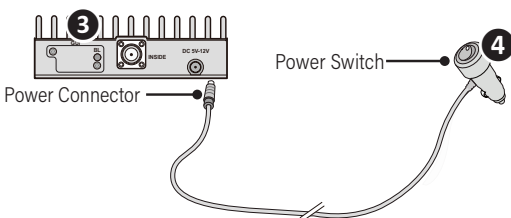
### STEP 3. PLACE BOOSTER AND CABLES



Select a well-ventilated location for the booster that is away from excessive heat, direct sunlight, and moisture. We often suggest installing beneath a seat or within the front console.

Connect the cable from the outside antenna to the connection marked OUTSIDE and connect the cable from inside patch antenna to the connection marked INSIDE. Hand tighten the connections and secure any loose cable.

### STEP 4. CONNECT TO POWER



Connect the DC power cord connector to the signal booster and the adapter end to the cigarette lighter adapter to your vehicle. Once all connections are connected, turn the power switch on the adapter to ON. The POWER LED will briefly flash YELLOW/RED during initialization to indicate that the signal booster is ready for use.

Note: This booster is also compatible with an AC power adapter, SureCall part # SC-AC-5.9V2.8A-B.

# QUICK SETUP GUIDE

## SureCall Fusion2Go XR

### Have questions?

We have answers! Reach out to our US-based support team:

**Call:** 1-888-365-6283  
**Email:** support@surecall.com  
**Visit:** www.surecall.com

### Verify Your System is Working

Place a call in a location where you previously experienced poor cell service and confirm that your phone is receiving boosted signal. To improve performance, antenna adjustments may be needed. Review the following potential causes:

(1) Verify the two antennas have sufficient separation/isolation from the other and (2) at least 12 inches from other radiating elements

**Note:** Bars are not always a reliable measure of signal. The best way to confirm signal coverage is the ability to place and hold a call.

### 'POWER' LED

During initialization, the LED will briefly flash YELLOW/RED. This is part of normal operation.

LED State	Status	Indication
Solid GREEN	Normal	Normal
Solid YELLOW	Reduced Performance	Indicates gain attenuation of more than 8 dB. Increased antenna separation is recommended. Adjust the location of your outside and/or inside antenna to maximize the distance between them.
Solid RED	Alert – Oscillation detected	Indicates that oscillation has caused the booster to shut off. Antenna repositioning is needed. Verify that there is sufficient separation between the outside and inside antennas, as well as any potentially interfering objects or antennas.

### Troubleshooting

#### Problem: Signal booster has no power

Connect the power supply to an alternate power source. Verify that the power source is not controlled by a switch that has removed power from the outlet. If the POWER LED on the signal booster remains OFF, contact tech support at: 1-888-365-6283 or support@surecall.com

#### Problem: Following installation, signal coverage has not improved

(1) Verify that all cable connections are tightly fitted. (2) Try further separating the antennas. (3) Verify that there is usable signal where the outside antenna is placed.



Quickly optimize your antenna separation with the 'SureCall' mobile app that is available in the Google Play or Apple's App Store

### Industry-best Three-Year Warranty

Thank you for your SureCall purchase. Please register your new product at [www.surecall.com/activate](http://www.surecall.com/activate)

For complete warranty text, including limitations and liability, see the Fusion2Go XR user manual, available online at or [www.surecall.com](http://www.surecall.com).

### Specifications

Product	Fusion2Go XR
Uplink Frequency (MHz)	698-716 / 776-787 / 824-849 / 1850-1915 / 1710-1755
Downlink Frequency (MHz):	728-746 / 746-757 / 869-894 / 1930-1995 / 2110-2155
Supported Standards	4G, LTE, 5G cellular standards
Maximum Gain:	50 dB
Input Impedance:	50 $\Omega$
Gain Adjustment:	20 dB (Automatic)
Maximum Uplink Power:	29.0 dBm
DC Power:	6-15V
Noise Figure:	$\leq 6$ dB
VWSR:	$\leq 2.0$
Maximum Output Power:	1 Watt EIRP
Exterior Cable:	LMR 100 / 12.5 ft
RF Connectors:	FME Male (both ends)
Power Consumption:	$\leq 12$ W
Operation Temperature:	-4° to +158° F
Certification:	FCC ID: RSN-FUSION2GO5G (Fusion2Go 5G) Contains FCC ID: XPYNINAB1

### This is a CONSUMER device.

**BEFORE USE**, you **MUST REGISTER THIS DEVICE** with your wireless provider and have your provider's consent. Most wireless providers consent to the use of signal boosters. Some providers may not consent to the use of this device on their network. If you are unsure, contact your provider.

You **MUST** operate this device with approved antennas and cables as specified by the manufacturer. Antennas **MUST** be installed at least 20 cm (8 Inches) from any person.

You **MUST** cease operating this device immediately if requested by the FCC or a licensed wireless service provider.

**WARNING:** E911 location information may not be provided or may be inaccurate for calls served by using this device.

Operation is subject to the following two conditions: (1) this device may not cause harmful interference, and (2) this device must accept any interference received, including interference that may cause undesired operation.

The outside antenna must not be collocated or operating with any other antenna or booster.

48346 Milmont Drive | Fremont, California 94538 USA