

SureCall C-Band MIMO Indoor Panel Antenna (SC-648CBM)

Inside Wall-Mount Antenna

Overview

Designed to provide maximum coverage throughout indoor areas, the SureCall panel antenna is a high gain inside antenna that propagates signals in a 65° / 35° beamwidth.

The MIMO antenna transmits and receives signals directionally and is designed to cover C-Band frequencies.

- » N-Female connector (50 Ω)
- » 11.5 dBi gain
- » C-Band (3700 - 4000 MHz)
- » Wall-mounted indoor antenna
- » Includes mounting hardware
- » Connects to booster with SC-400 cable (sold separately)



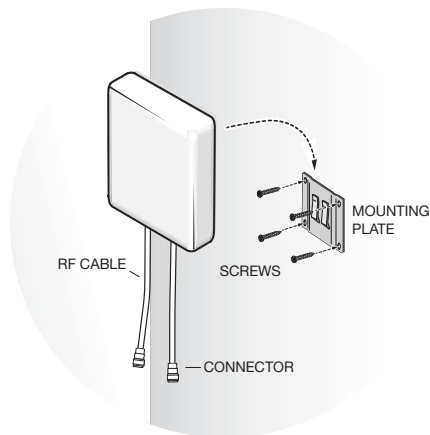
Specifications

Frequency	3700 - 4000 MHz
Gain	11.5 dBi
Polarization	±45°
Horizontal half-power beamwidth	65 ±10°
Vertical half-power beamwidth	35°
Front to back ratio	≥15 dB
VSWR	≤ 1.5
Isolation	≥20 dB
Input impedance	50 Ω
Max power	50W
Radiation pattern	Directional
Connector type	N-Female
Mount type	Wall-mounted Installation
Dimensions	7.2 x 6.4 x 2.6 in
Weight	1.33 lbs
Cover material	UV ABS
Operating temp.	-22°F to +113°F (-30°C to +45°C)

Installation

1. Choose the the ideal location for mounting antenna on a vertical surface. Ideal height off the floor should match the approximate height of regular cell phone use.
2. Using plate, mark position of desired screw placement with pencil or marker.
3. Screw mounting plate into place with the slide panel protruding towards you.
4. Slide antenna securely onto mounting plate.
5. Connect antenna with low-loss back and N-Male connectors to lead to your booster located inside.

Note: Wherever possible, it is recommended to provide maximum separation between outside and inside antennas. Remember to face the panel antenna away from the outside antenna.



Compatibility

Booster Compatibility: SureCall C-Band Signal Boosters

Cable Compatibility: Low-loss coax cables with N Male connectors